

# ***IBM SPSS Amos 24.0 Desktop Installation Instructions***

The SPSS logo is displayed in white text on a red rectangular background in the top right corner of the page.

## **Contents**

System requirements

Installing from the Supplied DVD

Installing from a SPSS Download Portal

## **System requirements**

Operating system: Microsoft Windows 8 and latest (32 bit) only  
Hardware:

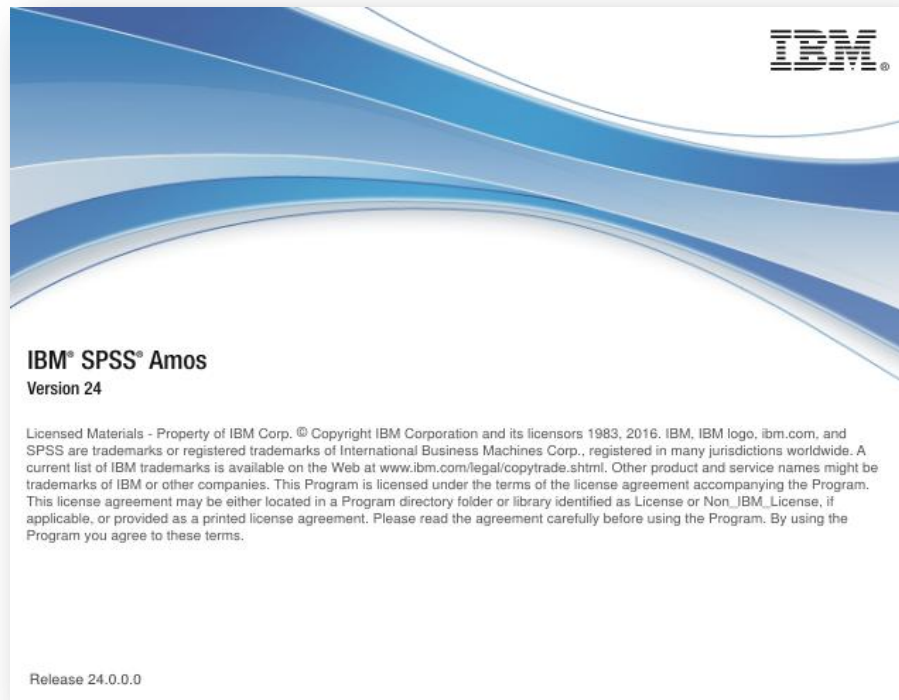
- Intel or AMD x86 processor running at 1 gigahertz (GHz) or higher
- 2 gigabyte (GB) of RAM or more
- 1 GB of available hard-disk free space.
- Because the installer extracts files before installing, the same amount of temporary disk space is also needed for the installer.
- XGA (1024x768) or a higher-resolution monitor
- Currently, SPSS Amos is only available on the Windows platform

## **Installing from the Supplied DVD**

1. Insert the AMOS DVD into your DVD drive.
3. Right-click Open Click on Amos *setup.exe* and choose **Run as Administrator**.
4. And then follow the below instructions

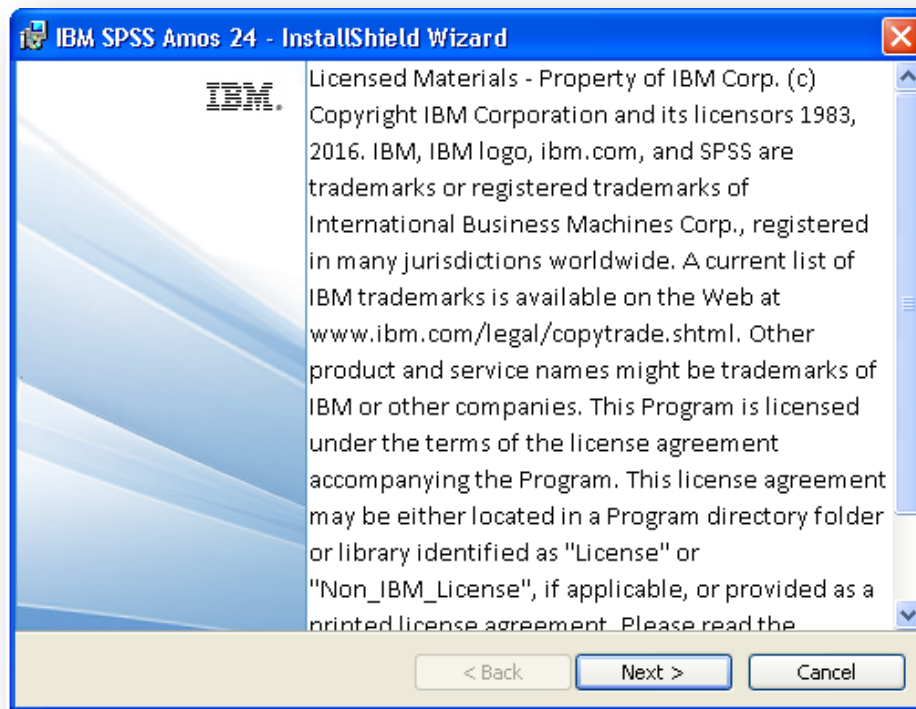
# ***IBM SPSS Amos 24.0 Desktop Installation Instructions***

**SPSS**

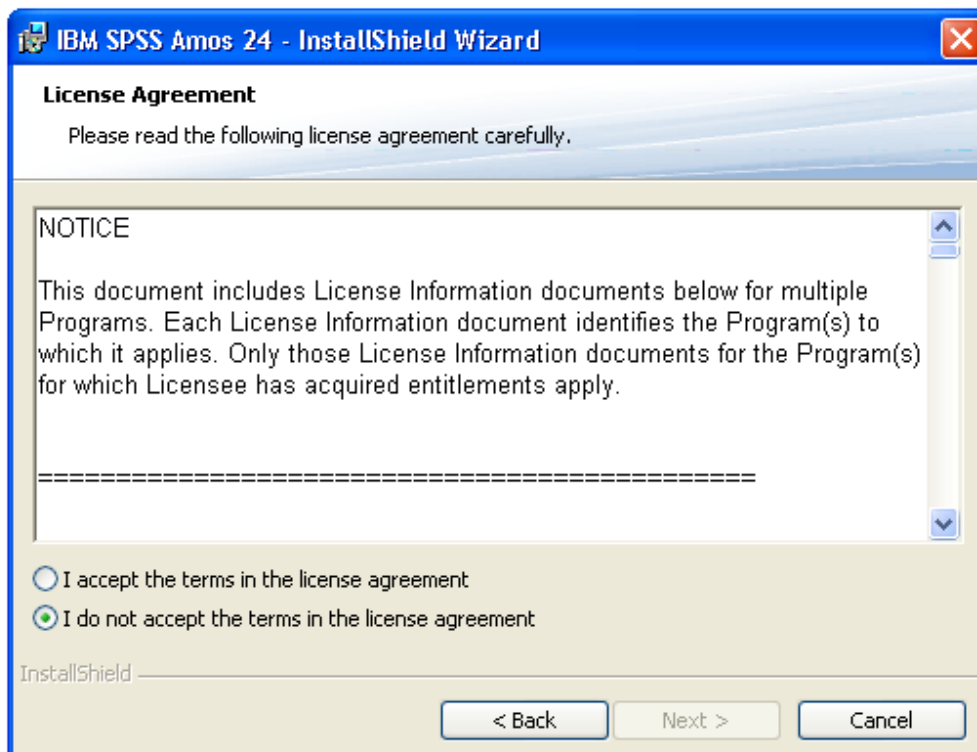


# IBM SPSS Amos 24.0 Desktop Installation Instructions

SPSS



InstallShield Wizard Next

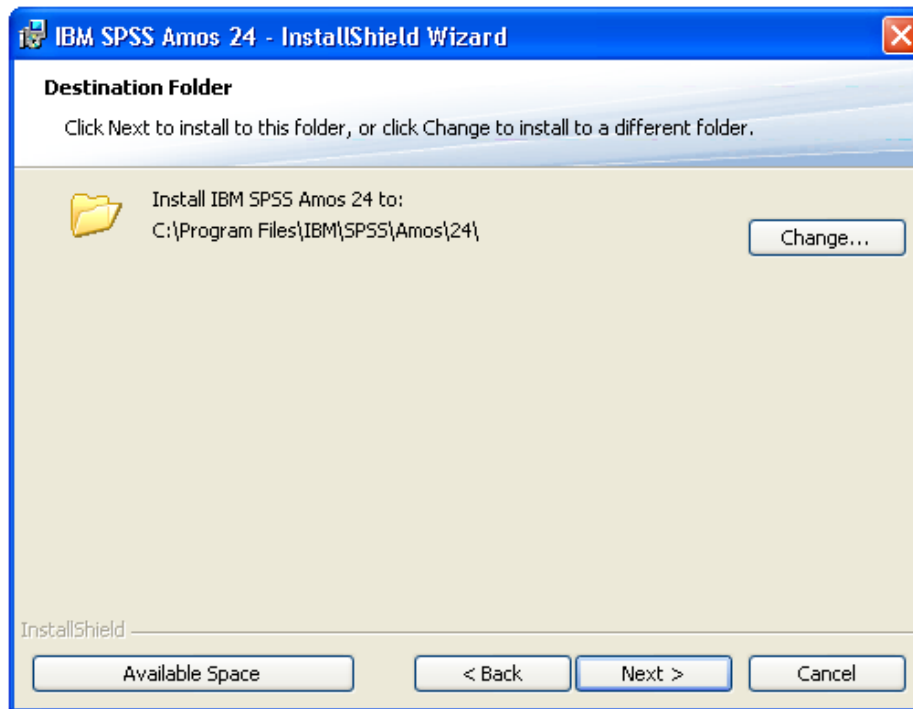


Accept the terms in the license agreement

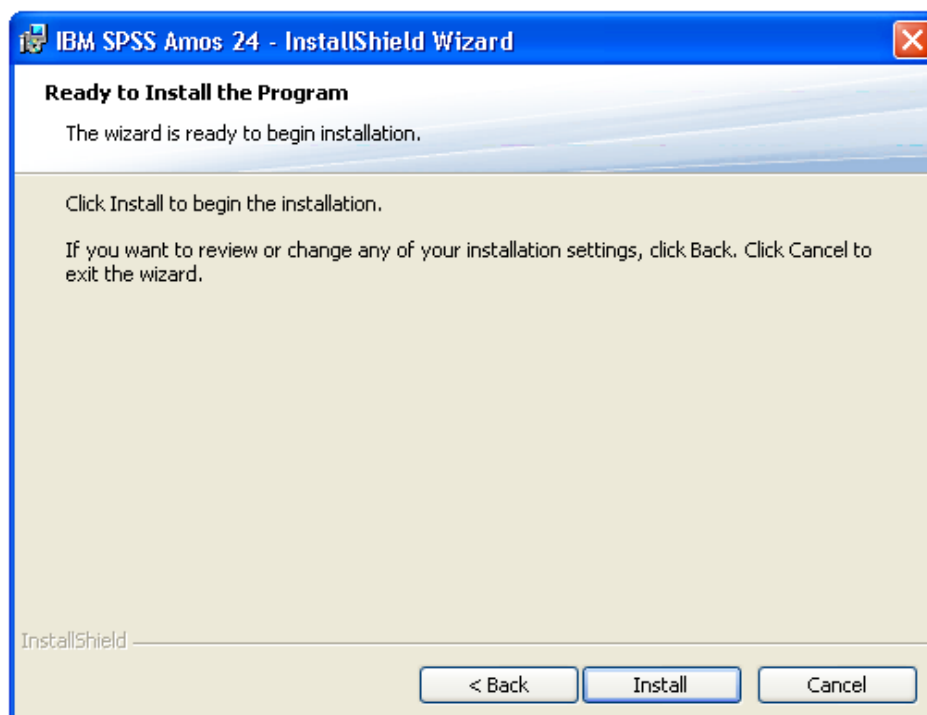
SPSS South Asia Pvt Ltd

# IBM SPSS Amos 24.0 Desktop Installation Instructions

SPSS



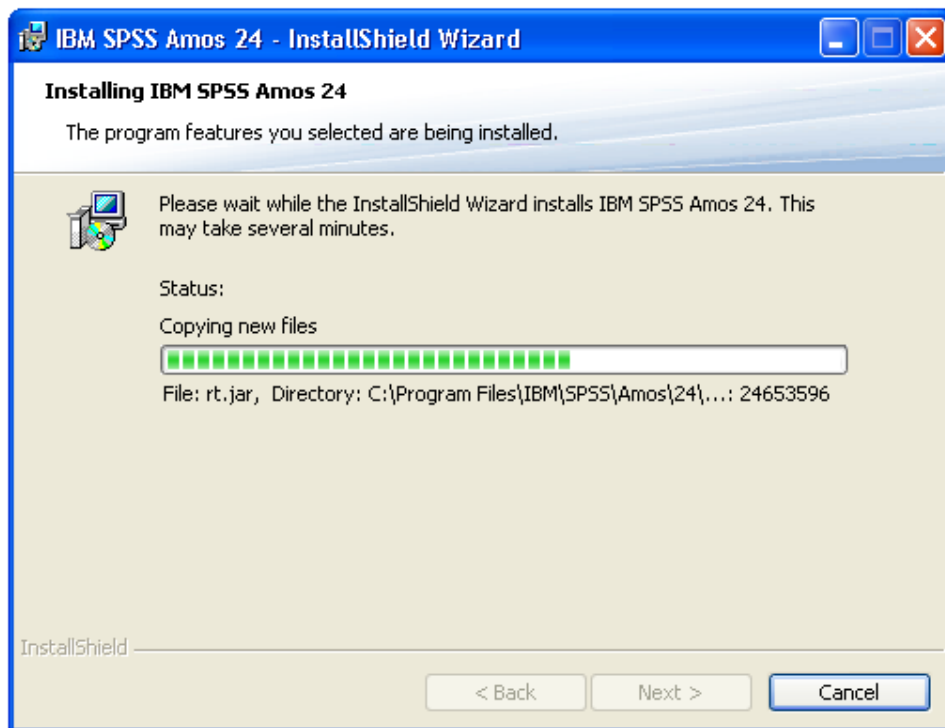
Destination default folder path Next



Ready to Install the Program Install

# IBM SPSS Amos 24.0 Desktop Installation Instructions

SPSS



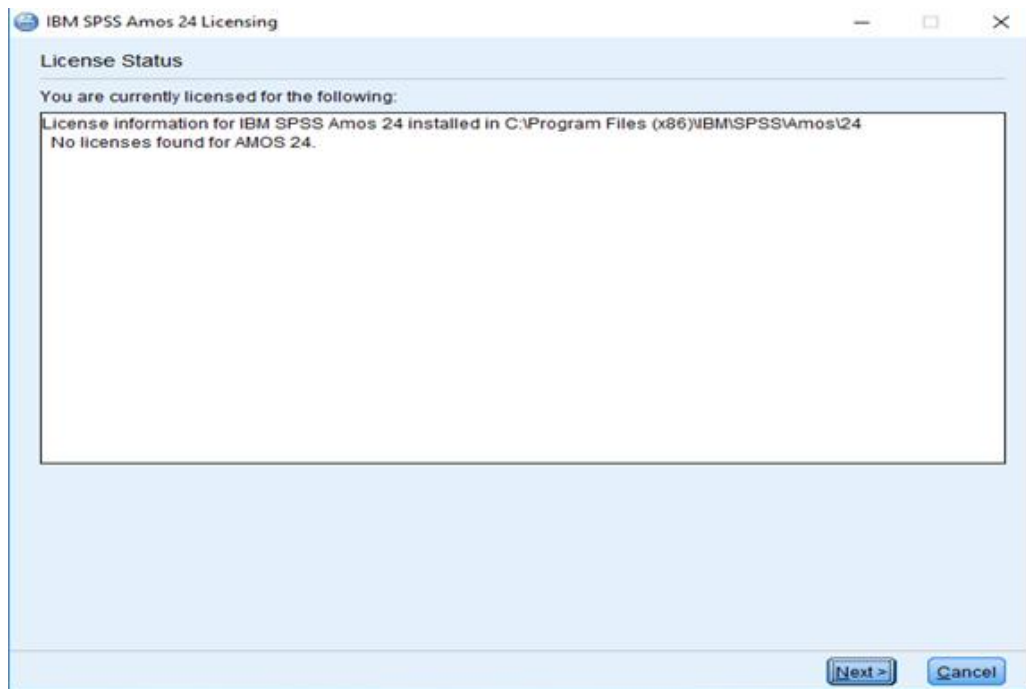
Installing IBM SPSS Amos 24 Next



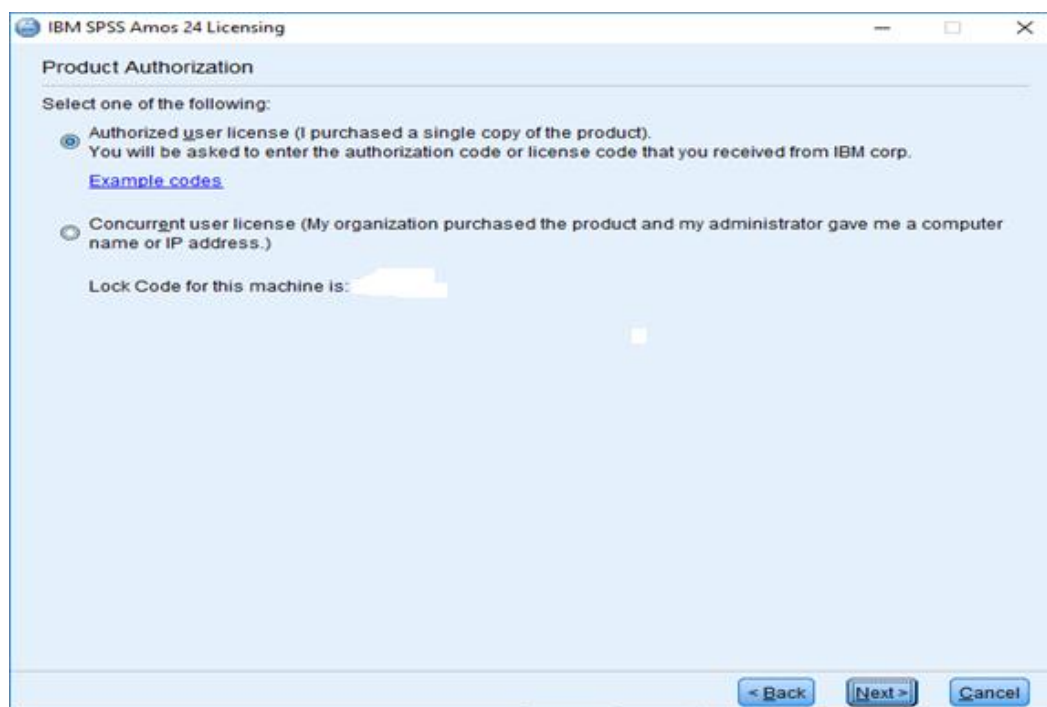
InstallShield Wizard Completed-Finish

# IBM SPSS Amos 24.0 Desktop Installation Instructions

SPSS



License Status Next



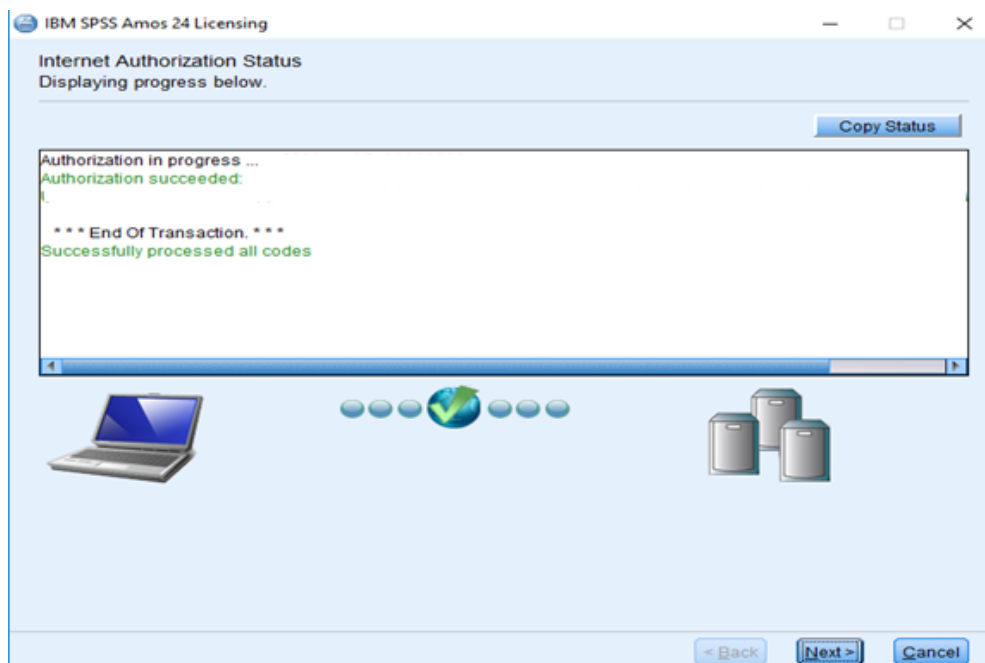
Select Authorized user

# IBM SPSS Amos 24.0 Desktop Installation Instructions

SPSS



Enter the 20 Digit Authorization code Next



Internet Authorization Status Next & Finish the installation